

ED-580T/ED-580XT
Specification

ED-580T/ED-580XT
Video Duodenoscope

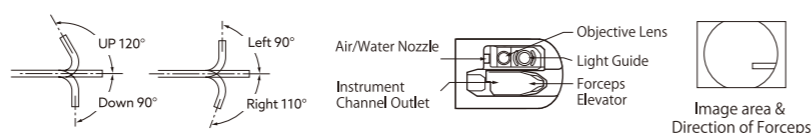
Endoscope



New ED-580T/ED-580XT

Viewing direction	ED-580T:105° (retro-viewing 15°) ED-580XT:95° (retro-viewing 5°)
Field of view	100°
Observation range	4-60mm
Bending capability	UP 120° / Down 90° Left 90° / Right 110°
Working length	1250mm
Total length	1550mm
Distal end diameter	13.1mm
Insertion tube diameter	11.3mm
Minimum diameter of instrument channel	4.2mm

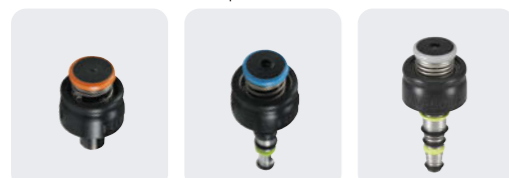
Product name: Video Endoscope
GMDN:36112
Generic name: Flexible video duodenoscope



- Improved treatment capability G-Lock
- G7 control portion and advanced force transmission
- Increased angle of endotherapy devices
- Easier distal end cleaning

Accessories

Valves for G7 control portion



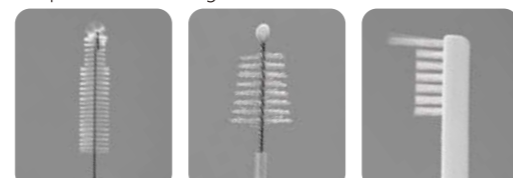
SB-605 Suction Valve
AW-603 Air/Water Valve
AW-604G Gas/Water Valve

Distal End Cap



DC-07D

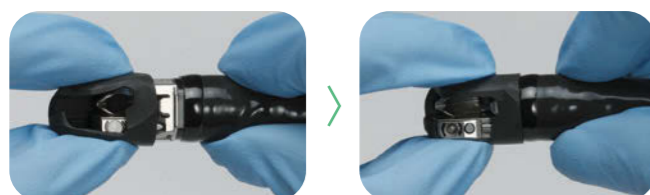
Disposable Cleaning Brushes



WB11003DV for suction valve cylinder, air/water valve cylinder and instrument channel inlet
WB7025DC for instrument channel and suction channel
WB1318DE for distal end and forceps elevator

Attachment and detachment of distal end cap

Attachment



Cover the distal end cap until the installation groove of the distal end is hidden completely.

Make sure that the distal end cap is attached tightly by pulling it straight.

Detachment



Turn over a portion of distal end cap near the instrument channel outlet.

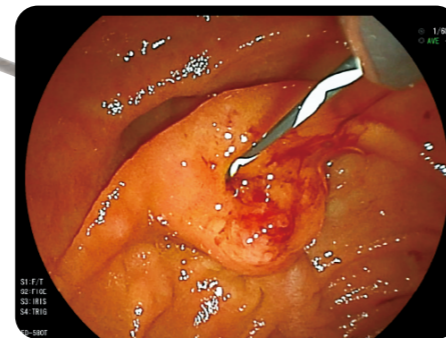
While turning the portion counterclockwise, pull it straight out.

The new duodenoscope ED-580T/ED-580XT

New ED-580T/ED-580XT supports efficient ERCP procedure with less stress.

Improved treatment capability G-Lock

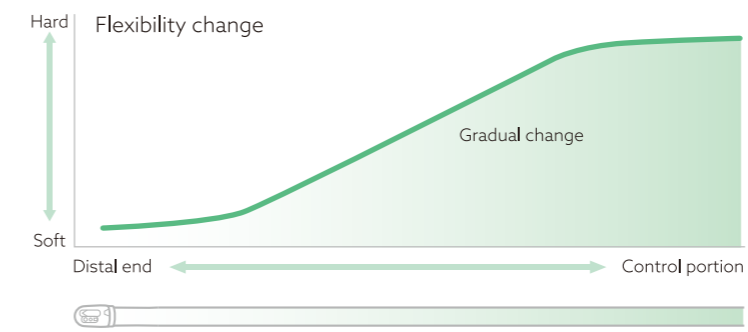
ED-580T and ED-580XT have the G-Lock incorporated at the distal end. The G-Lock, containing the forceps elevator and the contact section, enables the guidewire to be fixed firmly with simple operation of the forceps elevator. In addition, the specially designed round shaped forceps elevator leads to less damage to the guidewire. The inner tube of the instrument channel uses an optimized material to make a device to be inserted smoothly. This feature enables exchange of devices with less stress. The combination of new G-Lock and smooth inner tube helps offering efficient ERCP procedures.



Case image of guidewire lock

Lower the lever with the thumb.

Improved 1 > G7 control portion and advanced force transmission

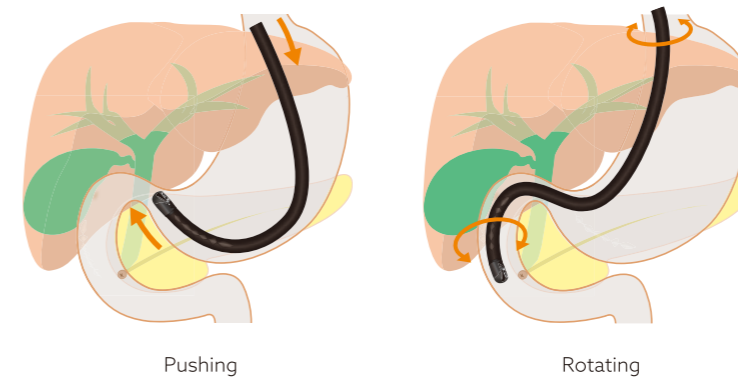


Intuitive operation

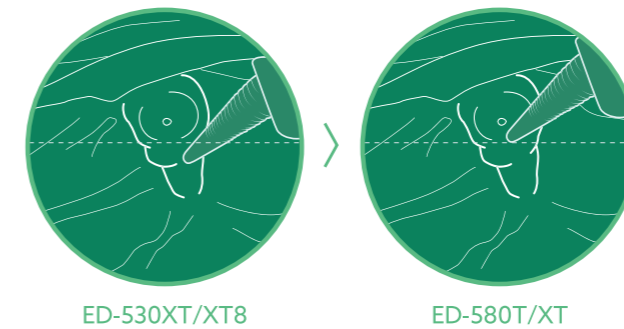
The G7 control portion has a rounded surface design to fit in the hand, and its button layout makes intuitive operation possible.

Advanced force transmission

With the optimized elastic material and the elasticity gradually increasing from the distal end to the control portion, the insertion portion enables more efficient transmission of pushing and rotating forces as intended by the physician.



Improved 2 > Increased angle of endotherapy devices



Case image of increased angle of endotherapy devices

The forceps elevator design offers increased maximum angle of endotherapy devices. The movement of forceps elevator has good response for forceps elevator lever movement.

Improved 3 > Easier distal end cleaning



The single-use distal end cap permits easier brushing access to the distal end of the endoscope. In addition, the elevator wire is sealed to allow easier cleaning.