

EPX-3500 HD

Electronic Video Endoscopy System

VP-3500HD

XL-4450



- High image quality
- Three preset FICE patterns available
- Applicable to full HD wide monitors

EPX-3500HD

Electronic Video Endoscopy System



High definition images and superior functions for advanced endoscopic diagnosis and treatment.

High image quality

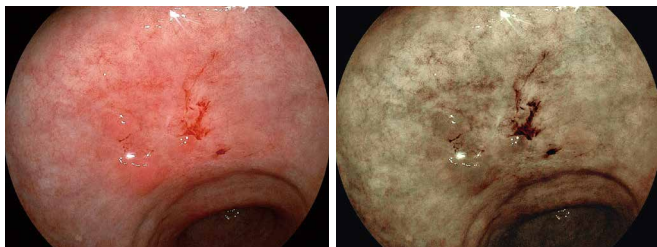
VP-3500HD supports diagnoses with its advanced image processing technologies not incorporated in existing standard-class models. It offers clear images by using superior functions such as structure emphasis, color emphasis, automatic light control and anti-blur.

Three preset FICE* patterns available



Three patterns of FICE*, which enhances the color tone of the endoscopic images by estimating spectral images of specific wavelength components from the original image by image processing, are preset and can be easily operated using the scope switch.

*Flexible spectral Imaging Color Enhancement (Image-Enhanced Endoscopy)

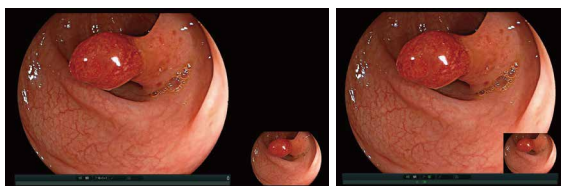


White light image

FICE 0

Applicable to full HD wide monitors

Captured image is displayed without overlapping with the real-time view when a full HD wide monitor is used.



Full HD monitor

5x4 monitor

Specifications

VP-3500HD Specification	
Digital output	2 x DVI (1280 x 1024p or 1920 x 1080p)
Analog output	1 x RGB TV (PAL, RGB+SYNC), 1 x S-VIDEO (Y/C), 1 x VIDEO (Composite)
Control terminal	2 x Remote, 2 x Peripheral, 1 x Keyboard, 1 x Card reader, 1 x Aux, 1 x Digital printer, 1 x Foot switch, 1 x Ethernet (100/10Base)
Color adjustment	Brightness, Red, Green, Blue, R-Hue, Chroma : 9 steps
Contrast	3 steps
Structure emphasis	High, Middle, Low, Off
Color emphasis	High, Middle, Low, Off
FICE	3 presets (FICE 0, 1, 8)
Iris	Average, Peak, Auto
Image storage	USB flash drive
Power rating	AC100-240V±10% 50/60Hz 1.0-0.3A*
Dimensions (W x H x D)	390 x 105 x 460mm
Weight	8kg

Product name : Processor

*less than 90VA

GMDN : 18034

Generic name : Endoscopic video image processor

XL-4450 Specification

Lamp rated value	Main lamp : 300W Xenon lamp LMP-002 Emergency lamp : 75W Halogen lamp	
Light control	Automatic light control	
Lamp cooling method	Forced air cooling	
Air supply pump	High, Middle, Low, Off	
Light save	On, Off	
Transmitted illumination	On, Off	
Power rating	230V±10% 50Hz 1.7A	120V±10% 60Hz 3.3A
Dimensions (W x H x D)	390 x 155 x 450mm	
Weight	15kg	

Product name : Light source

GMDN : 35158

Generic name : Endoscopic light source, line-powered

Applicable endoscopes

530 series, 590 series

FUJIFILM

FUJIFILM Corporation

26-30, NISHIAZABU 2-CHOME, MINATO-KU, TOKYO 106-8620, JAPAN
http://www.fujifilm.com/